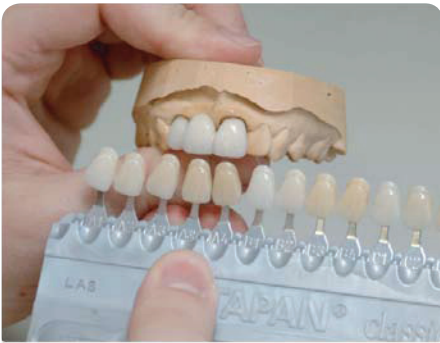


Cosmetic - Spaced Teeth



When a tooth is cracked, a porcelain veneer can be used to restore the tooth.

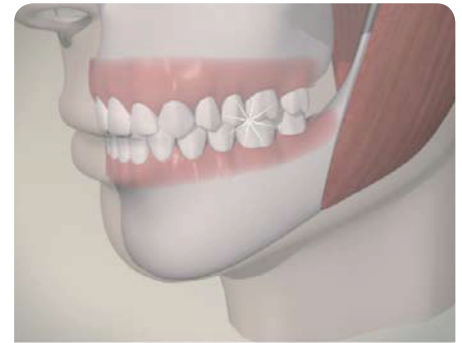
The cracked tooth is first prepared by removing a thin layer of enamel.



A shade guide is used to determine the exact color for the veneer and impressions are taken to ensure that the veneer fits correctly in your mouth.



If necessary, your dentist will make and insert a temporary veneer. Meanwhile, your final veneer is custom made at a dental lab, to fit perfectly in your mouth.



To complete the restoration, the temporary veneer is removed and the final veneer is cemented in your mouth.

Notes:
