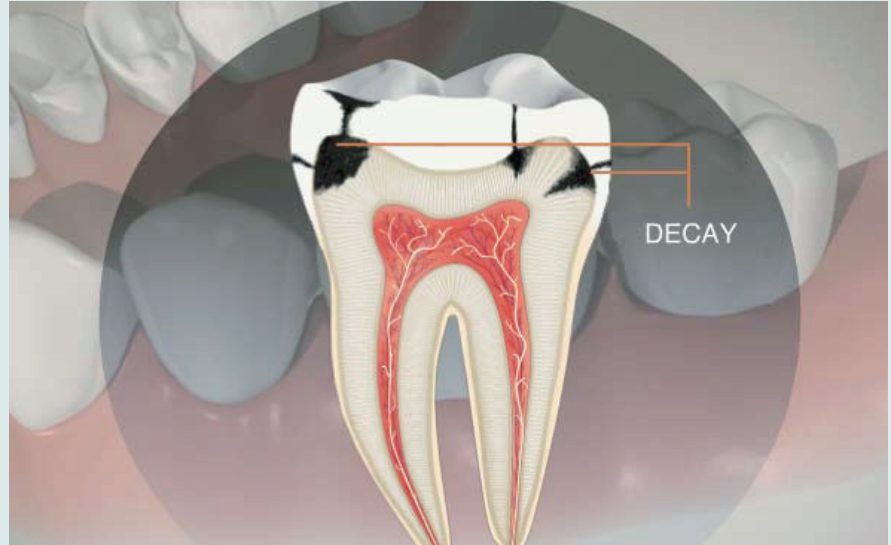


Decay - Inlay

When a tooth is slightly decayed, an inlay can be used to restore the tooth.

In this example, you can see that the decay is through the tooth's enamel, but not all the way to the pulp chamber.

It is important to receive timely dental attention to prevent the decay from spreading further inside the tooth.



To begin the restoration, the decay taken in order to model the exact shape required for the inlay. A temporary filling is made and inserted until the final inlay is ready.



Meanwhile, the impression is sent to a dental lab. To make the restoration, the lab technician produces models based on the impression in order to create an inlay that will function properly and fit perfectly in your mouth.



When the final inlay is ready, the temporary filling is removed, and the final inlay restoration is cemented in place. Your dentist or hygienist, will be able to answer any other questions you have about this procedure.

Notes:
