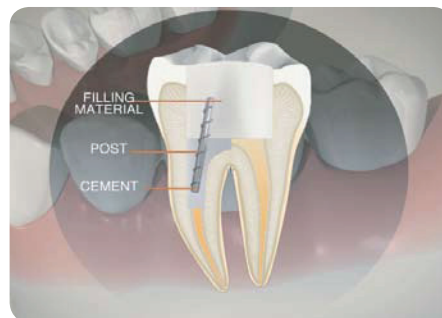
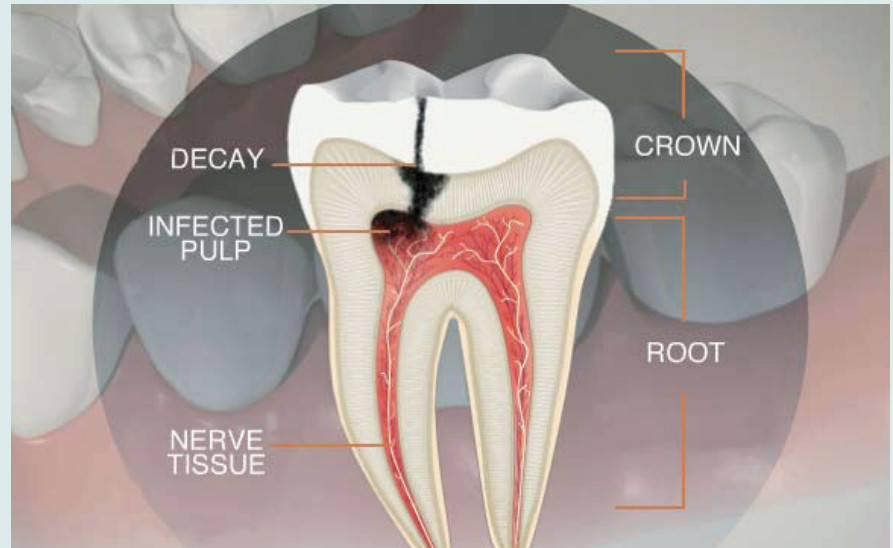


## Decay - Root Canal (Direct Post & Core)

You can see from this crosssectional view that decay has penetrated to the pulp of the tooth. When a tooth is significantly decayed, meaning the pulp is damaged, a root canal is required. The steps below demonstrate the direct post and core restoration used in conjunction with a crown restoration.

Your dentist or hygienist, will be able to answer any other questions you have about this procedure.



Gutta-Percha replaces the pulp to keep the tooth strong. The direct post is then cemented in place and the tooth is prepared for the crown. A temporary crown may be used while the final crown is custom made at the dental lab.

Once the final crown is finished, the temporary crown is removed and the final crown is cemented in place.

### Notes:

---



---



---