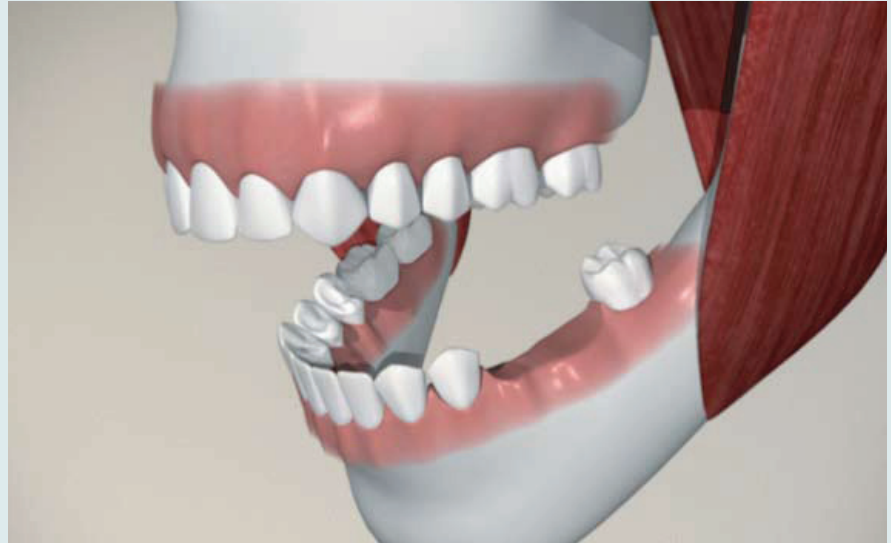


Multiple Missing Teeth - Removable Partial Denture

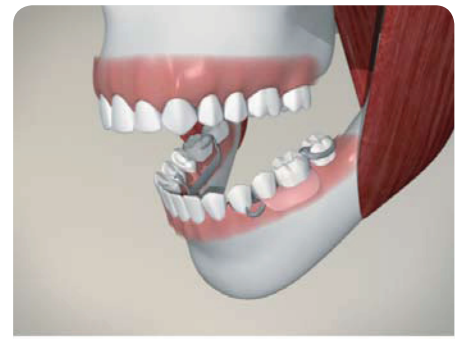
When multiple teeth are missing, one restoration option is a removable partial denture, or RPD. To begin this restoration, some of your teeth are prepared to accept the RPD. Impressions are then taken to ensure that the RPD fits in your mouth perfectly.



Your RPD is custom made at the dental lab. Your dentist will tell you how long this takes, and schedule appointments to continue the procedure.



At several stages in the development process, your RPD will be trial fitted and adjusted to fit your mouth perfectly.



Your final RPD is then inserted in your mouth. You can remove the RPD as needed, based on the advice your dentist provides for cleaning and other considerations.

Notes:
