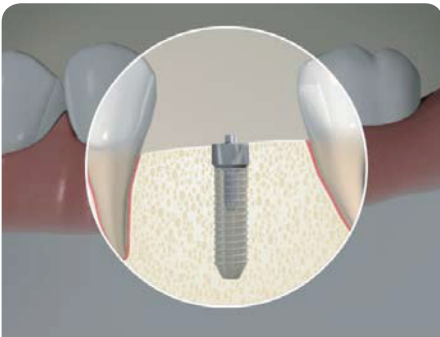
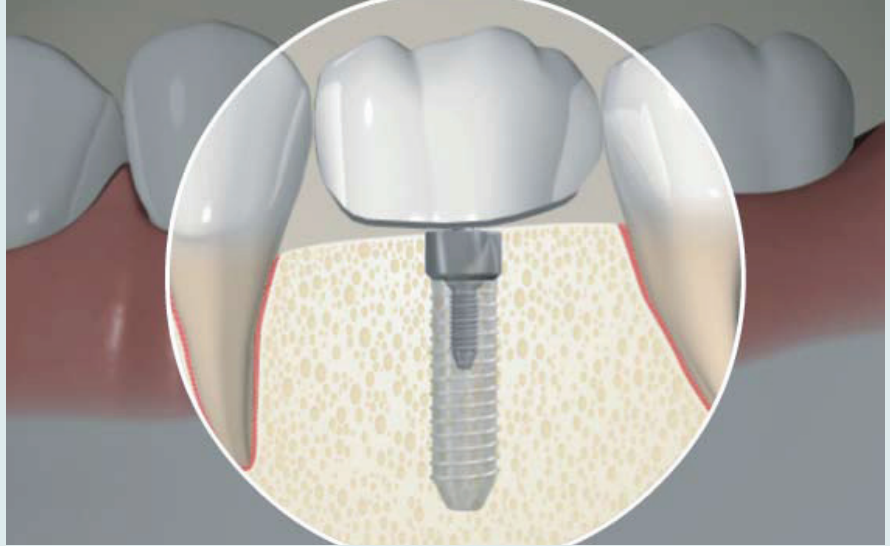


## Single Missing Tooth - Implant / Fixed Crown

When a single tooth is missing, one restoration option is an implant with a screw-fixed crown. The advantages of choosing an implant to restore a missing tooth is that it will function like a regular tooth and it does not require any other teeth to be affected unlike having a bridge or denture.

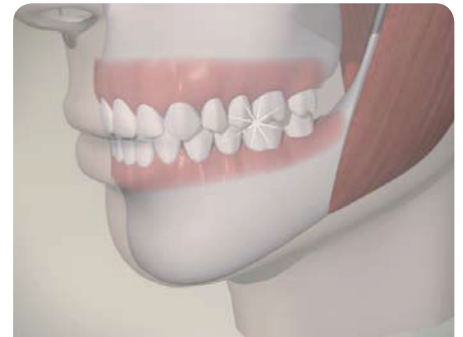
To begin the implant restoration, an implant and healing cap are placed and the bone is allowed to heal, and integrate the implant.



Next an abutment is placed and the gums are left to heal while your crown is made. Impressions are taken to ensure that the crown fits in your mouth perfectly.



Meanwhile, the impression is sent to a dental lab. To make the restoration, the lab technician produces models based on the impression in order to create a crown that will function properly and fit perfectly in your mouth.



Your final crown is inserted into your mouth, and held in place with a special gold screw. This completes the implant restoration with a screw-fixed crown. Your dentist will be able to answer any other questions you have about this procedure.

### Notes:

---

---

---